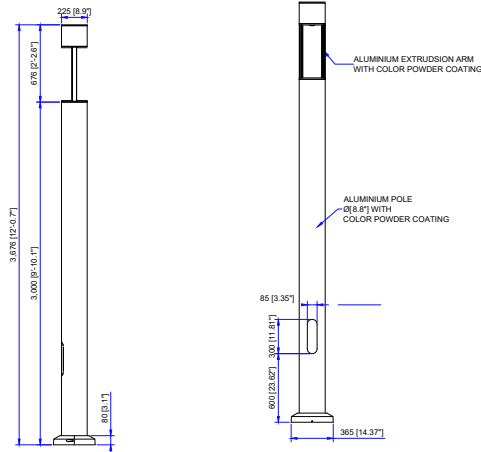


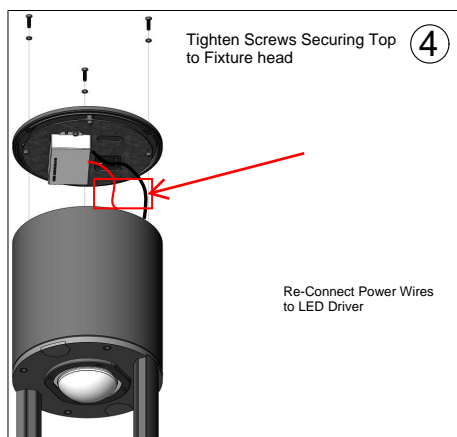
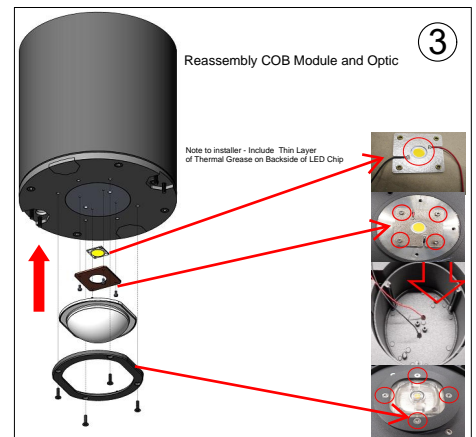
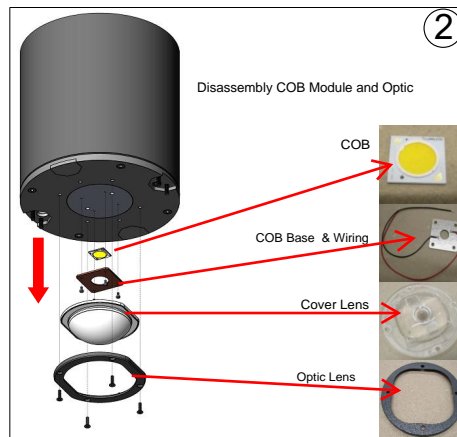
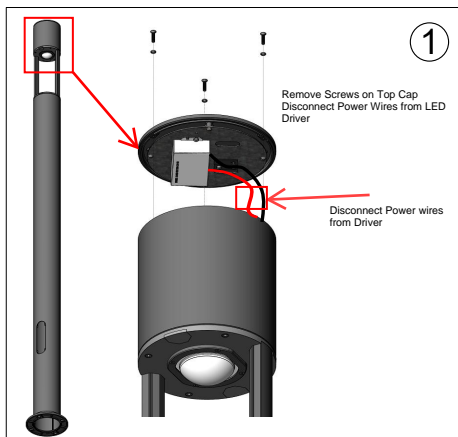
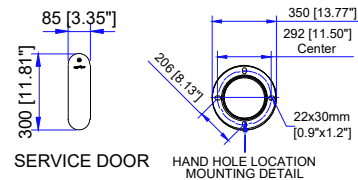
INSTALLATION AND SERVICE MANUAL

LIGMAN
LIGHTING USA

Product drawing (dimensions)



SUITABLE FOR WET LOCATIONS



Notice to Installer

Wiring Instruction ⚠ Warning:

- Risk of Fire and Electrical Shock, This fixture must be installed only by a qualified electrician, Installation must adhere to the National Electrical Code (NEC) and all applicable local and federal regulations.
- Always disconnect power before servicing the fixture.

Ligman Lighting USA

7144 NE Progress Court, Hillsboro
Oregon, 97124, USA
Tel : 503 645 0500

www.ligmanlightingusa.com

UPA-31941-SCBT 22/05/2024 REV.0
1/1

FM-TS-13-1/13-05-2563/Rev.6